

# PRH180

Powerful, Professional Cleaning

**WORKS HARDER**

**LASTS LONGER**

**BUILT SMARTER**



**Numatic**

## Delivering the same high-performance, high-quality and long-lasting Numatic results as always...



**Packed full of great features, providing powerful and professional cleaning from a high-efficiency, long-life 620W motor.**

### Enhanced Sustainability

Made using our ReFlo recycled plastic reducing the use of virgin plastic wherever possible, whilst maintaining the same quality and durability in our products.

ReFlo Technology uses high-quality recycled, post-industrial and post-consumer plastics across the Numatic range.

### Works Harder

Pro features include a high-efficiency TriTex filter, multi-surface ProFlo floor tool, long 9 metre cable, and high-quality Aluminium tube set.

### Lasts Longer

Built for the long-haul with a 2-Year Commercial Warranty and a motor designed and tested beyond industry standard.

### Built Smarter

Made using a minimum 45% recycled plastic\*, including all accessories.

### Compact & Convenient

Equipped with a long cleaning reach, on-board tool storage, handy carry handle and stores neatly away.

### Easy, Clean & Safe Emptying

High-efficiency, triple layer HepaFlo filter bags.

### A Tool for Every Job

Tackle hard-to-reach areas with the precision cleaning kit.

\*45% represents the minimum use of recycled plastic in our sustainable ReFlo vacuum series, including kits and accessories.



## Features



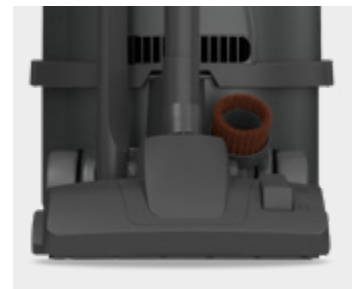
Convenient Carry Handle and On-board Cable Storage



Multi-surface ProFlo Floor Tool



Genuine High-quality Numatic Accessories



On-board Tool Storage

## Kit



## Specifications

<b>8.0L</b> Capacity	<b>620W</b> Motor	<b>6.0KG</b> Weight
Power <b>230V AC 50/60Hz</b>		Power Cord <b>9.0m</b>
Suction H <sub>2</sub> O <b>2300mm</b>		Dimensions (WxLxH) <b>340x365x360mm</b>